



www.salscareandsupport.co.uk

Our Core Values & Philosophy



All young people need help, guidance and support whilst they grow and develop into adults. Sal's Care and Support, believes that everyone has the right to a safe, secure environment with opportunities to explore themselves and the world around them, their abilities, and any areas for development, whilst reaching their full potential.

We believe these are the essential building blocks for the foundation of progress and integration. All young people are entitled to physical and emotional support of not only excellent quality but also meaningful. The staff at Sal's Care and Support ensure that warmth, stability, consistency, structure and boundaries are a constant active feature of their work with the young people that they support.

Genuine, caring relationships based on awareness for the dignity of the individual, combined with mutual respect, form the basis of interaction between staff and young people, are enabling factors in control issues.

Key Working sessions are integral to the work of the staff team. Regular and frequent supervision of the staff team is conducted by the manager, to ensure that issues relating to a young person's behaviour / needs are discussed, support and consistency is paramount when problem solving in line with their placement and pathway plan.

Sal's Care and Support, believes that by offering support and intervention within a nurturing and supportive environment, the young person's physical needs are being met, existing and potential anxieties can be addressed by our experienced staff team.

By offering a structured daily routine, with identified positive outcomes in the young person's placement/ pathway plan and the flexibility of access to other professionals, the young person will have a greater chance to develop socially accepted skills and move forward with their personal development; to make a positive contribution to society, thus reducing the risk of engaging in anti-social or offending behaviour.

Sal's Care and Support offers a support network that is conducive to promoting self-motivation with positive change.

Sal's Care and Support, aims to address individual's needs in a sensitive, structured and consistent way.

We are able to work with young people on a one to one basis and also within a group setting, encouraging growth, responsibility and conformity in addition to empowering the young person to achieve a healthy lifestyle.



Our Provisions



Welcome to Sal's Care and Support, a semi-independent living provision dedicated to supporting young people aged 18 and over who are navigating mental health challenges and/or autism.

Our service is designed to provide a safe, structured, and empowering environment where individuals can develop the confidence and skills needed for greater independence.

Our modern facilities feature fully furnished buildings, offering privacy and comfort within a supportive community setting. We have supported accommodation houses in Hadfield, Stockport and Blackpool.

Residents also have access to a wide range of high-quality amenities, including a welcoming cafeteria, a fully equipped gym, a state-of-the-art laundry room, a vibrant games room, a calming sensory room, and a dedicated classroom for continued learning and development.

Located just a short walk from Rhodeswood and Bottoms Reservoir, our setting offers the added benefit of scenic outdoor spaces—perfect for peaceful walks and time in nature to support wellbeing.

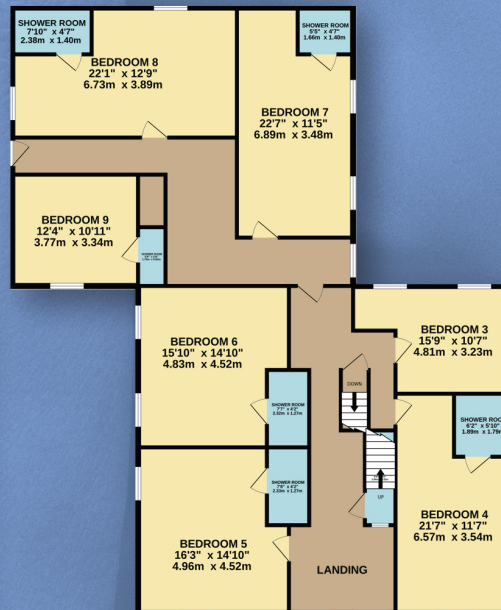
Sal's Care and Support is staffed 24 hours a day, 7 days a week by a dedicated team of experienced professionals committed to providing compassionate, person-centred care tailored to each young person's needs and aspirations.

OUR HADFIELD PROVISION

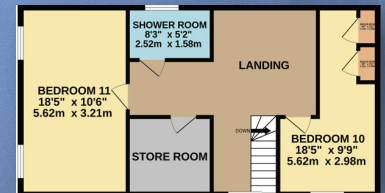
GROUND FLOOR

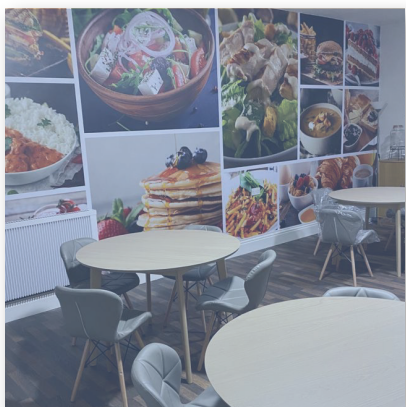


FIRST FLOOR



SECOND FLOOR





Give a Hand - Change a Life



www.salscareandsupport.co.uk

Call : 07563 894022.

Email: enquiry@salscareandsupport.co.uk

36-38 Waterside, Hadfield, Glossop, SK13 1BR